



# PARKVIEW

FLUSHING MEADOWS

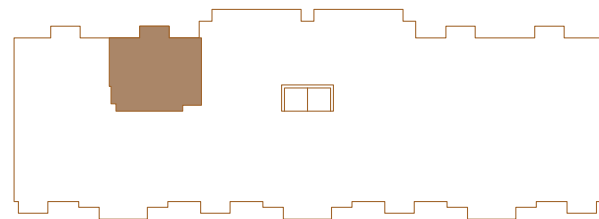
## RESIDENCE 6L

2 BEDROOM | 2 BATHROOM

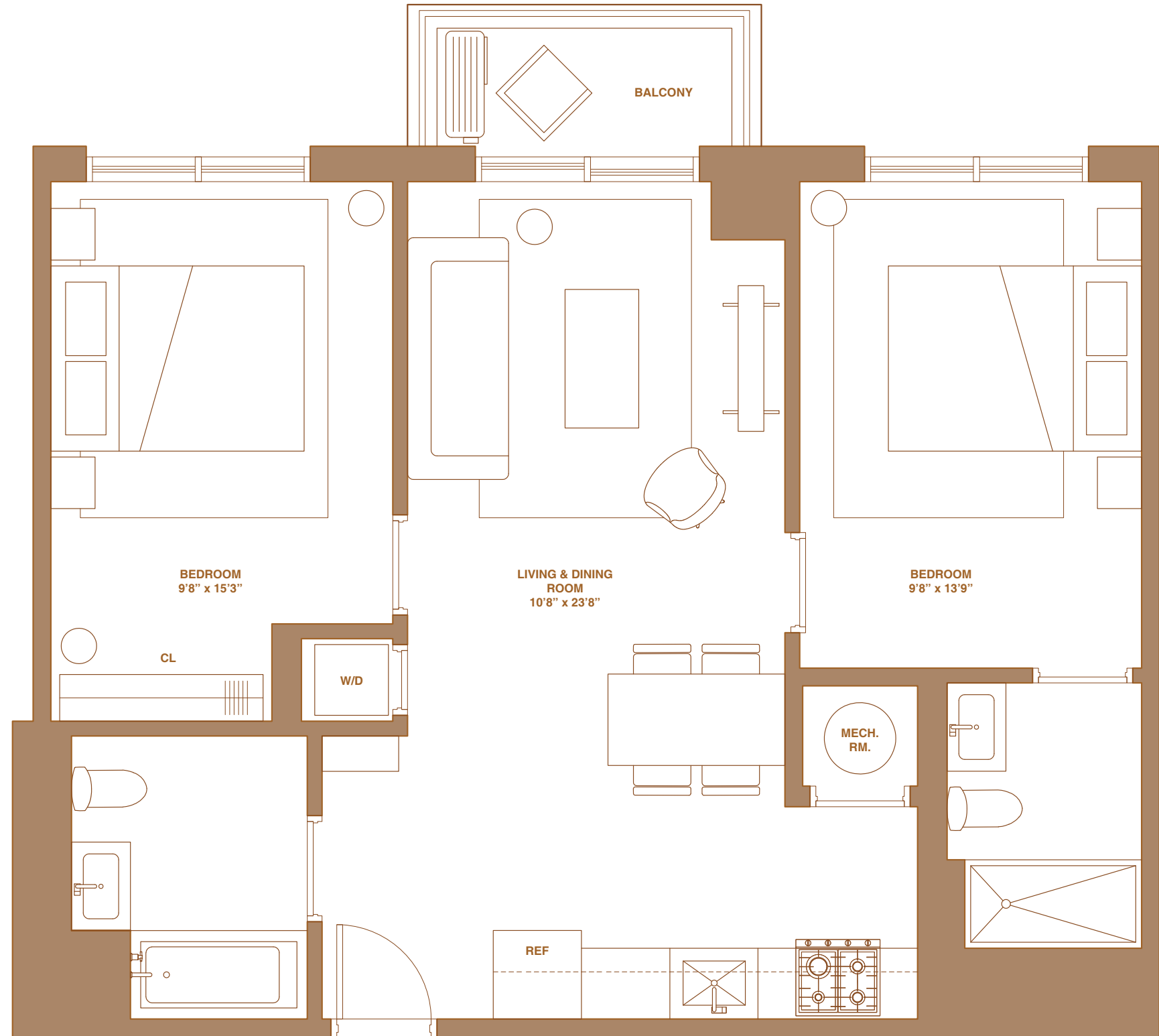
INTERIOR 754 SQ FT  
70 SQ M

EXTERIOR 40 SQ FT  
3.7 SQ M

EXPOSURE NORTH  
CITY VIEW



Fowler Ave



[parkviewflushing.com](http://parkviewflushing.com) | [sales@parkviewflushing.com](mailto:sales@parkviewflushing.com) | 131-11 Fowler Ave. Flushing, NY 11355

The complete offering terms are in an offering plan available from Sponsor, 131-05 HOLDING LLC. File No. CD19-0247. The artist representations and interior decorations, finishes, appliances and furnishings are provided for illustrative purposes only. Sponsor makes no representations or warranties except as may be set forth in the Offering Plan. Sponsor reserves the right to make changes in accordance with the Offering Plan. All dimensions are approximate and may contain minor variations floor to floor. Square footage exceeds the usable floor area. Furniture and furniture layouts are for illustrative purposes only and not being offered by Sponsor.